



SAN DIEGO

Highlights:

In each age group younger than 30, the majority of population is Latino. (See Figure 1).

48% of households in the region have income of less than \$60,000 and 52% have income higher than \$60,000 (See Figure 3).

The region lost nearly 100,000 jobs in 2010 (See Figure 6), but has a lower unemployment rate than the rest of California (See Figure 5).

1 in 13

ARE UNEMPLOYED*
*OF THE LABOR FORCE

1 in 8

LIVE BELOW*
THE POVERTY LINE
*excluding individuals living in group quarters

TOTAL

SAN DIEGO RESIDENTS

3,095,313

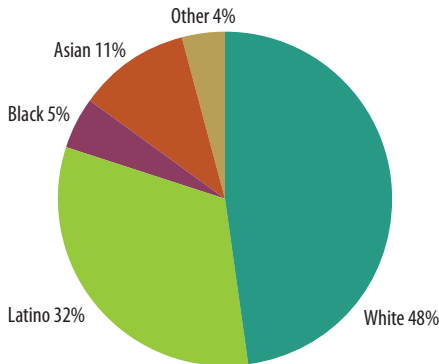
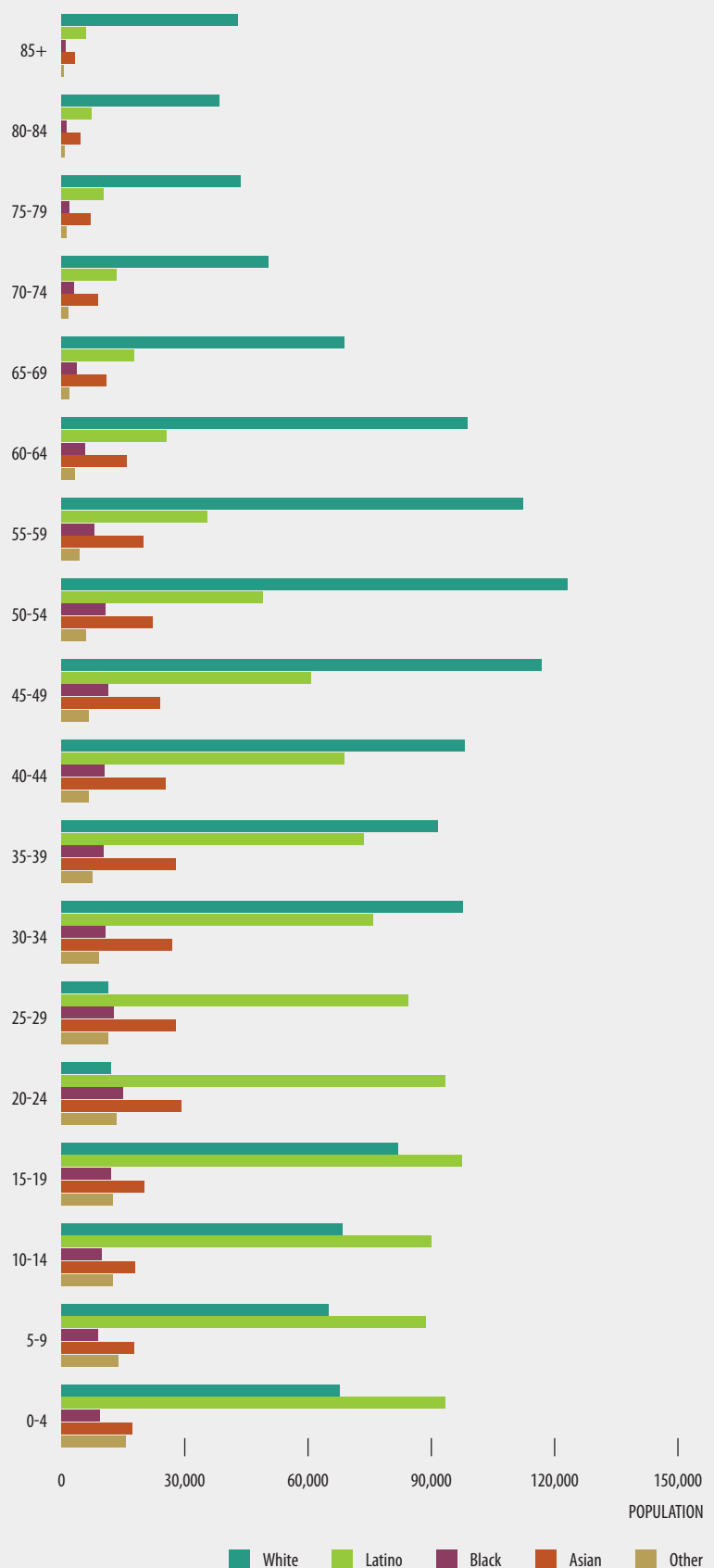
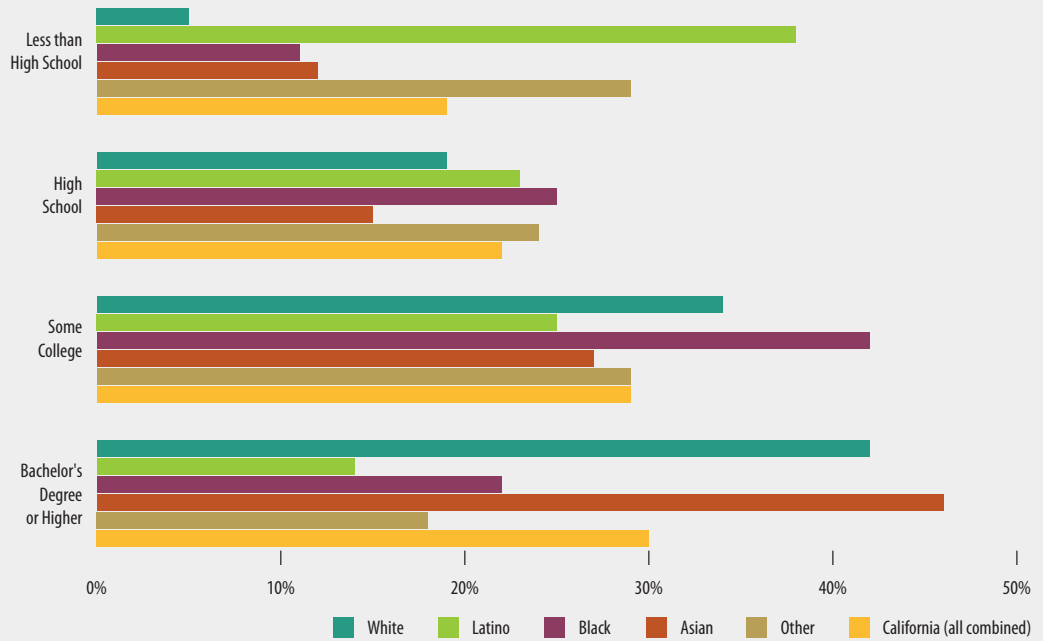


FIGURE 1 POPULATION DEMOGRAPHICS
Number of individuals in each age category, by race



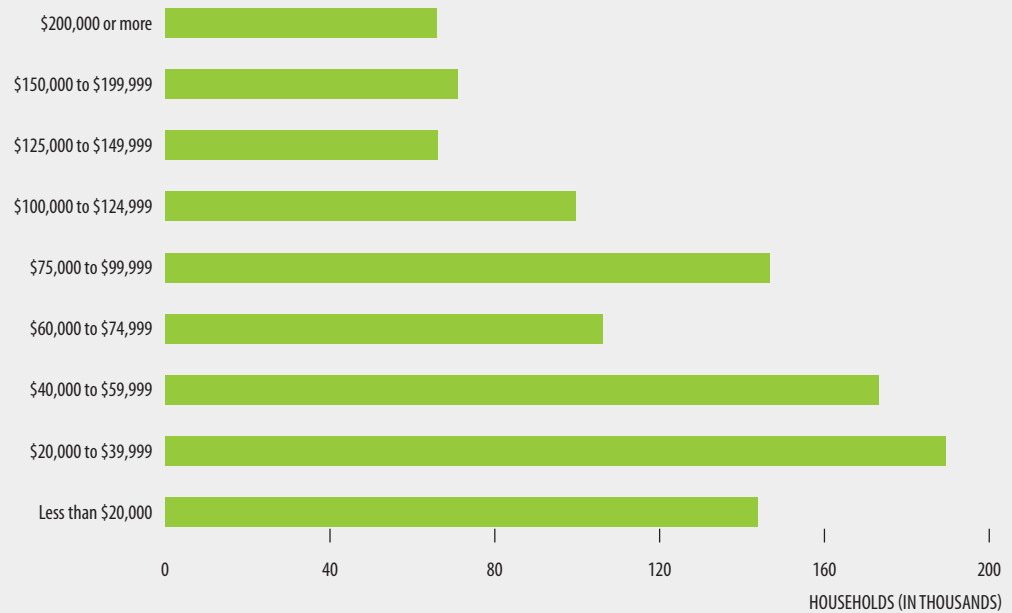
Source: 2006-2010 American Community, US Census

FIGURE 2 EDUCATIONAL ATTAINMENT BY RACE AND ETHNICITY
 Percent of population 25 and older, by education category



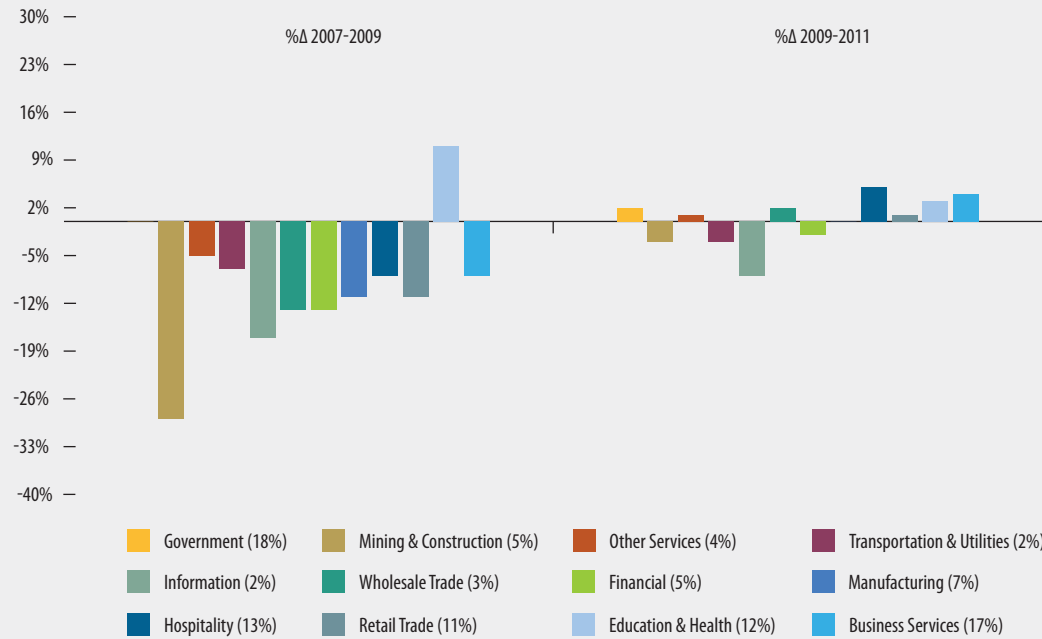
Source: 2006-2010 American Community, US Census

FIGURE 3 HOUSEHOLD INCOME DISTRIBUTION
 Number of households in each income category



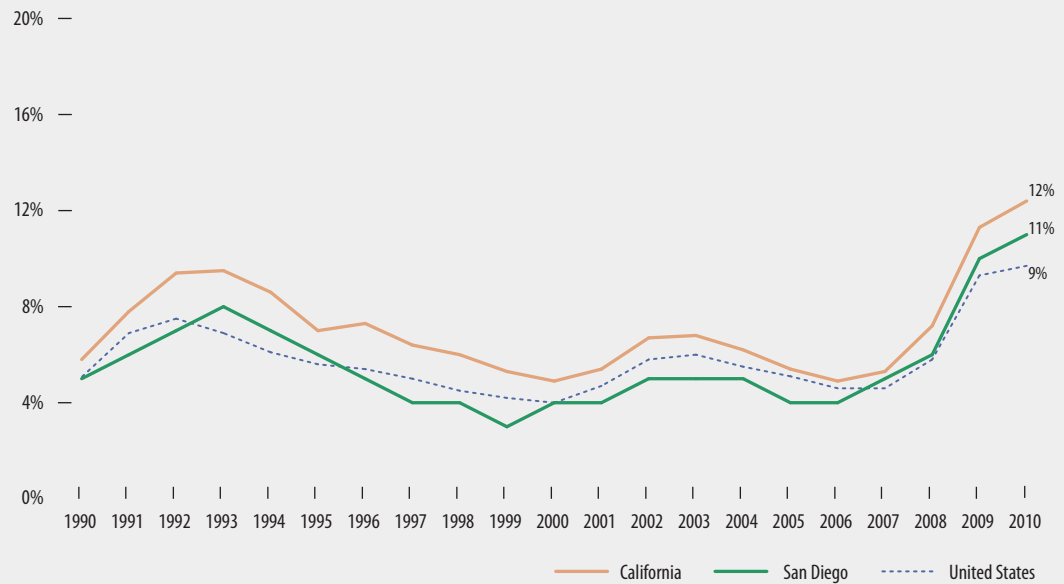
Source: 2006-2010 American Community, US Census

FIGURE 4 PERCENT CHANGE IN EMPLOYMENT BY SECTOR AND PERIOD



Source: Bureau of Labor Statistics, Current Employment Statistics (CES) seasonally adjusted
 Note: Number in parentheses is the sector size by employment share.

FIGURE 5 UNEMPLOYMENT RATE
 Percent of unemployed



Source: U.S. Bureau of Labor Statistics, Current Population Survey (CPS) and Local Area Unemployment Statistics (LAUS)

FIGURE 6 **JOBS LOST AND GAINED, BY SOURCE**
 Number of jobs lost or gained annually



Source: Bureau of Labor Statistics, Current Employment Statistics (CES) seasonally adjusted

HIGHLIGHTS

Education and Health, the 4th largest employment sector, is the only sector that experienced an increase in employment both during the 2007-2009 economic downturn and in the 2009-2011 period (See Figure 4).

The five top employers in the region all experienced some job gains between 2009-2011, but not enough to offset the general losses during the 2007-2009 recession (See Figure 4).

COUNTY

San Diego