

SAN LUIS OBISPO



Highlights:

In each age group younger than 40 the majority of the population is Latino, while in each age group 40 and older the majority of the population is White (See Figure 1).

In 2010, the region lost nearly 50,000 jobs, which is the largest decline in jobs between 1996 and 2010 (See Figure 6).

1 in 13
ARE UNEMPLOYED*
***OF THE LABOR FORCE**

1 in 8
LIVE BELOW*
THE POVERTY LINE
 *excluding individuals living in group quarters

TOTAL
 SAN LUIS OBISPO RESIDENTS
2,061,167

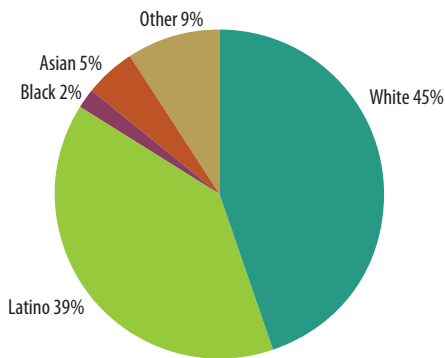
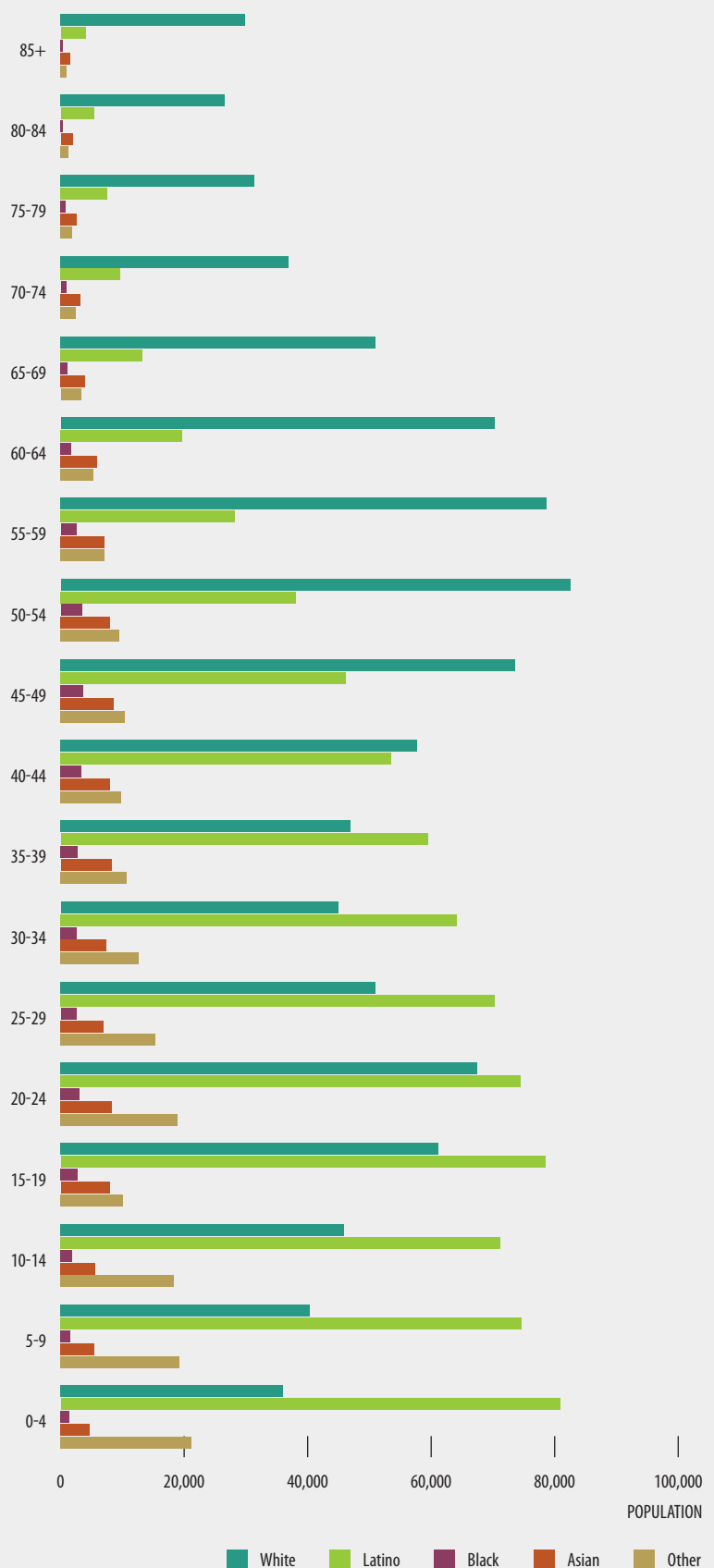


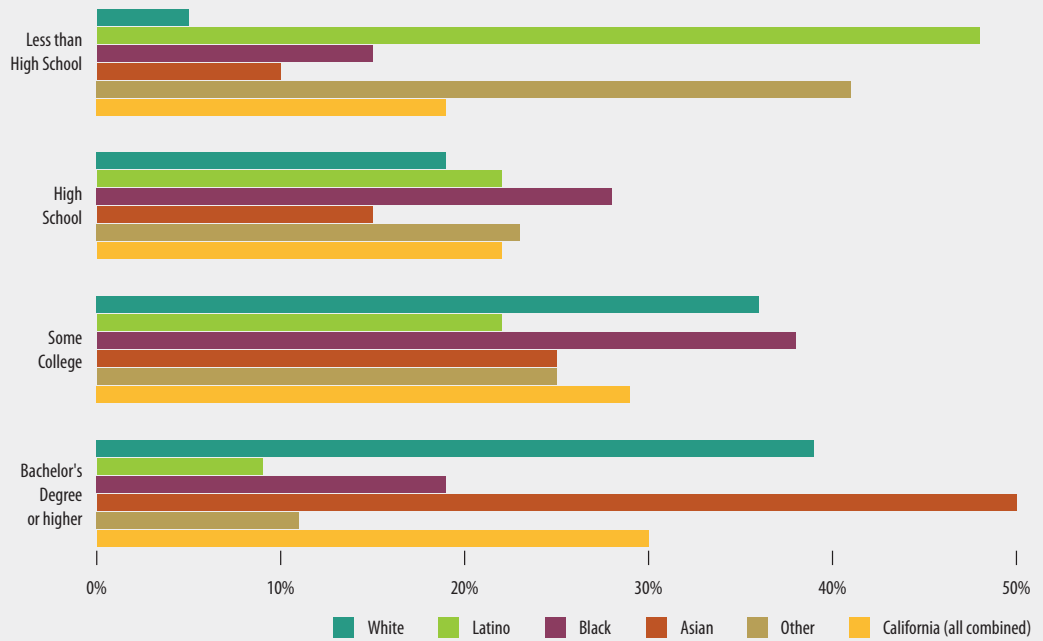
FIGURE 1 POPULATION DEMOGRAPHICS
 Number of individuals in each age category, by race



Source: 2006-2010 American Community, US Census

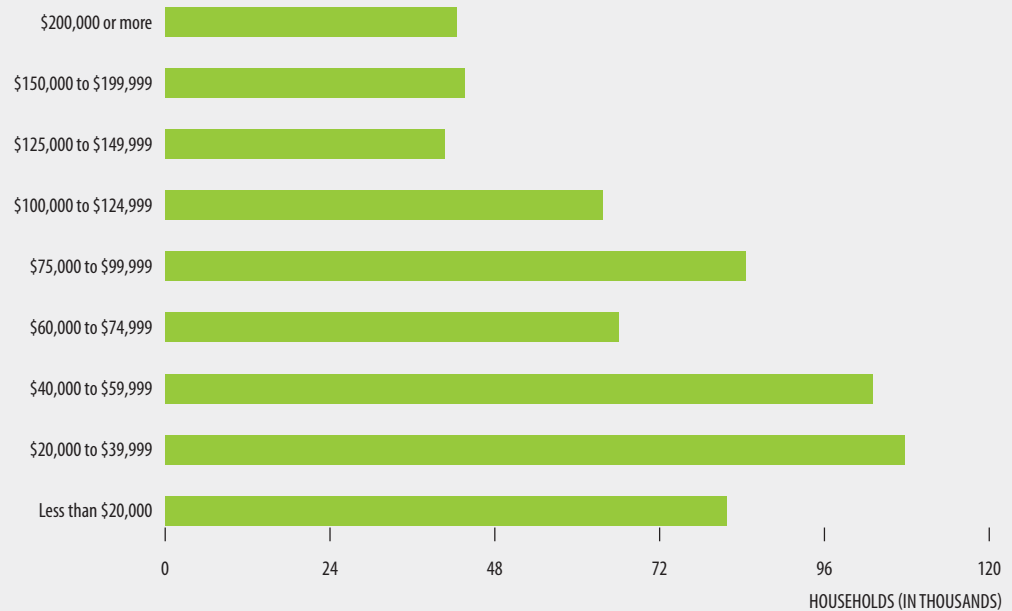


FIGURE 2 EDUCATIONAL ATTAINMENT BY RACE AND ETHNICITY
 Percent of population 25 and older, by education category



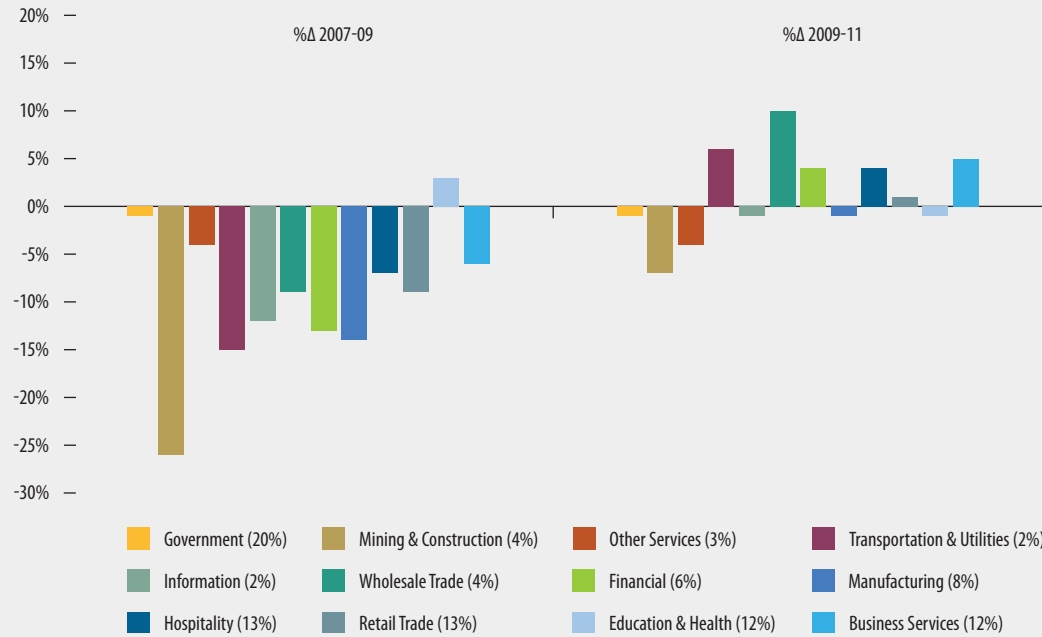
Source: 2006-2010 American Community, US Census

FIGURE 3 HOUSEHOLD INCOME DISTRIBUTION
 Number of households in each income category



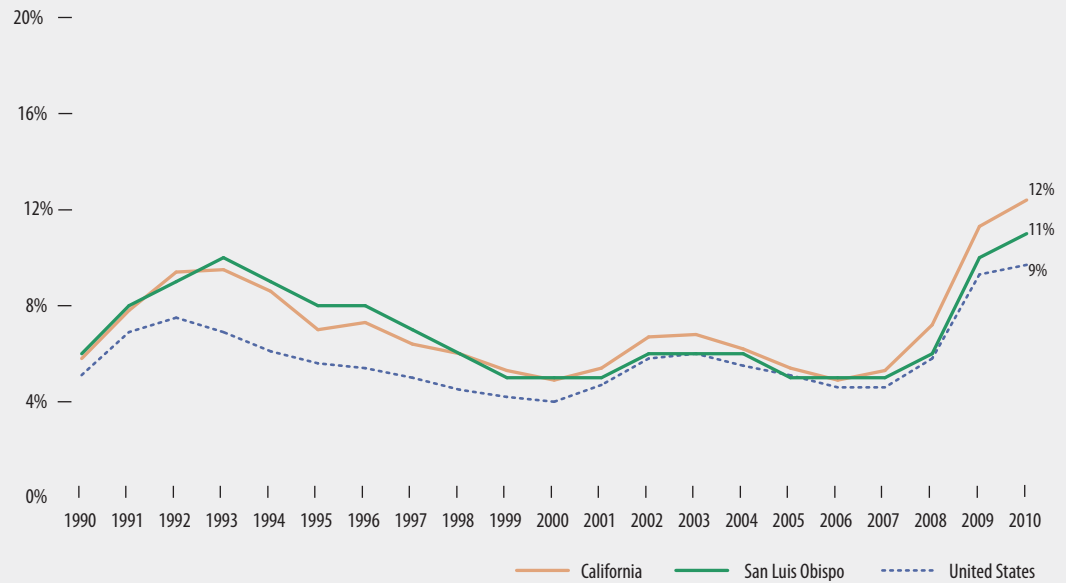
Source: 2006-2010 American Community, US Census

FIGURE 4 PERCENT CHANGE IN EMPLOYMENT BY SECTOR AND PERIOD



Source: Bureau of Labor Statistics, Current Employment Statistics (CES) seasonally adjusted
 Note: Number in parentheses is the sector size by employment share.

FIGURE 5 UNEMPLOYMENT RATE
 Percent of unemployed



Source: U.S. Bureau of Labor Statistics, Current Population Survey (CPS) and Local Area Unemployment Statistics (LAUS)

FIGURE 6 **JOBS GAINED AND LOST, BY SOURCE**
 Number of jobs lost or gained annually



Source: Bureau of Labor Statistics, Current Employment Statistics (CES) seasonally adjusted

HIGHLIGHTS

58% of the White population is 40 and older, while 72% of the Latino population is younger than 40 (See Figure 1).

The unemployment rate in the region follows California's trend pretty closely and was 11% in 2010 (See Figure 5).

COUNTY

- Monterey
- San Luis Obispo
- Santa Barbara
- Ventura