

SIERRA NEVADA



Highlights:

50% of the White population is 45 and older, while 50% of the Latino population is younger than 25 (See Figure 1).

Unemployment in the region is consistently higher than the rest of California, with a 15% unemployment rate in 2010 (See Figure 5).

1 in 9
ARE UNEMPLOYED*
*** OF THE LABOR FORCE**

1 in 5
LIVE BELOW*
THE POVERTY LINE
 *excluding individuals living in group quarters

TOTAL
 SIERRA NEVADA RESIDENTS
3,739,075

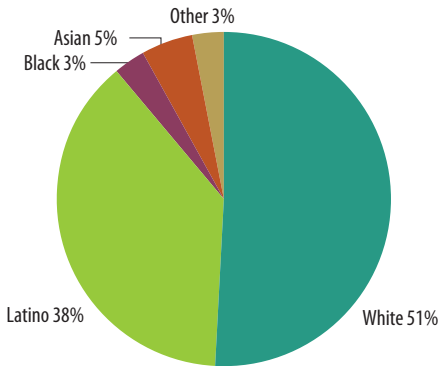
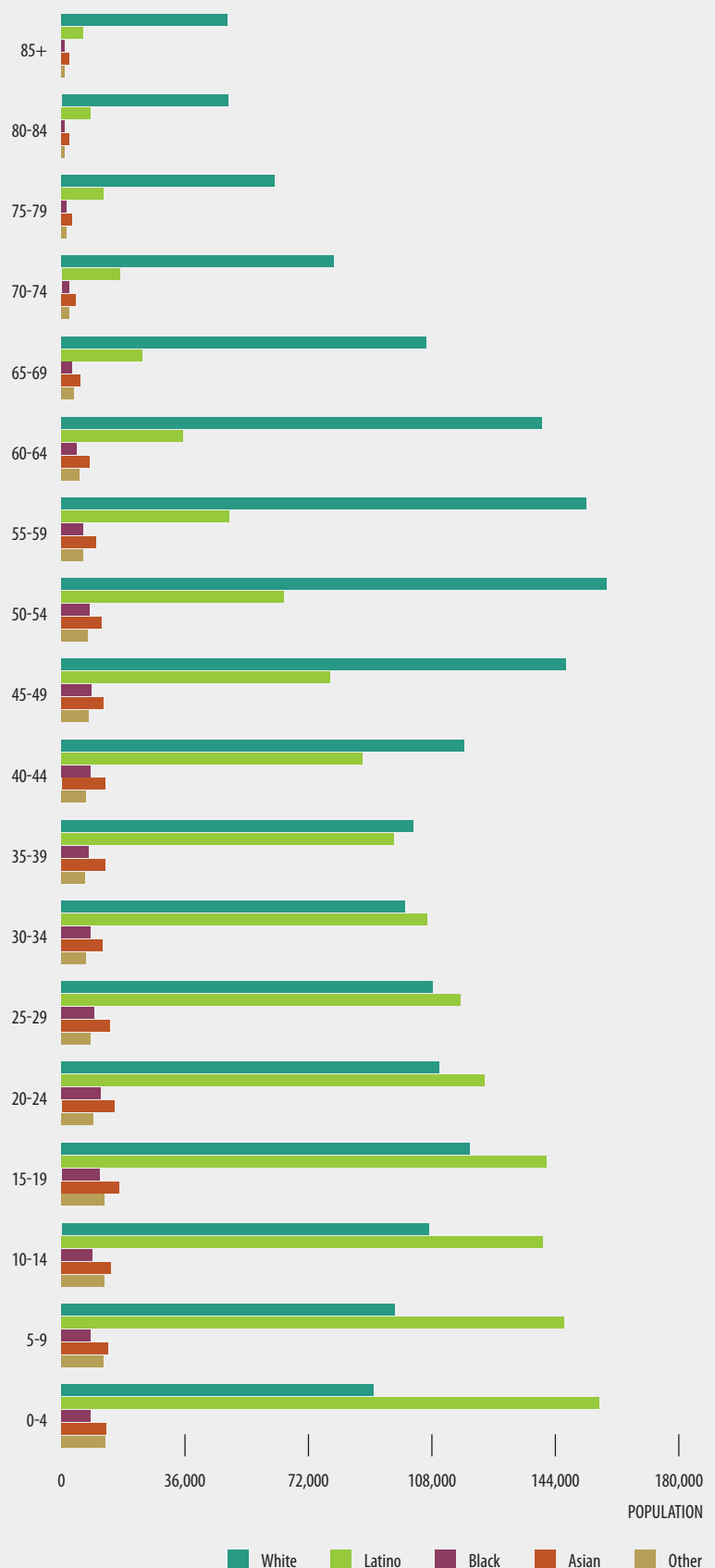


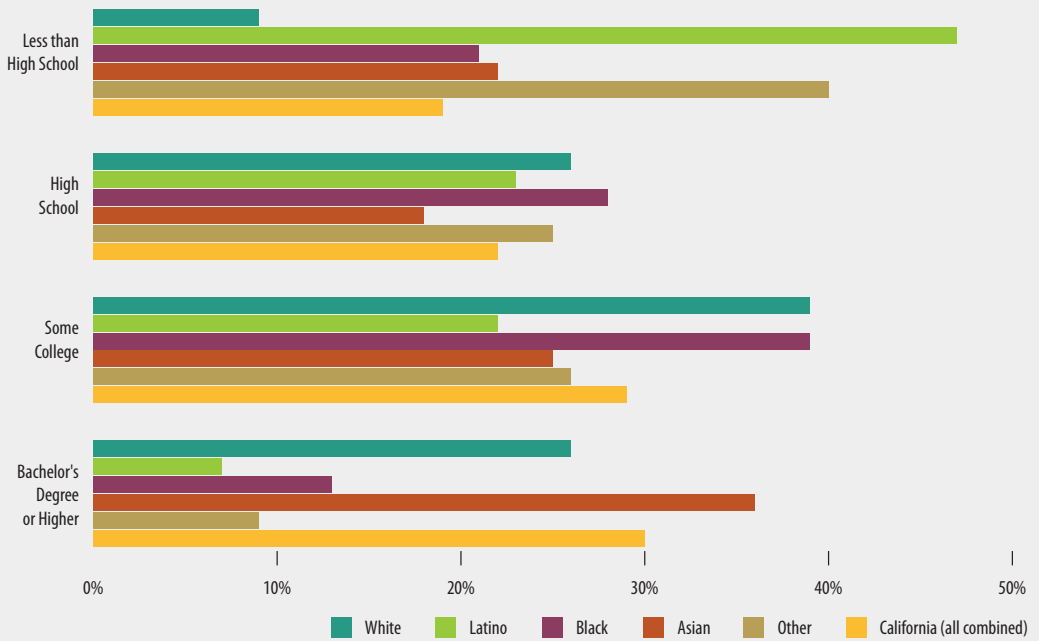
FIGURE 1 POPULATION DEMOGRAPHICS
 Number of individuals in each age category, by race



Source: 2006-2010 American Community, US Census

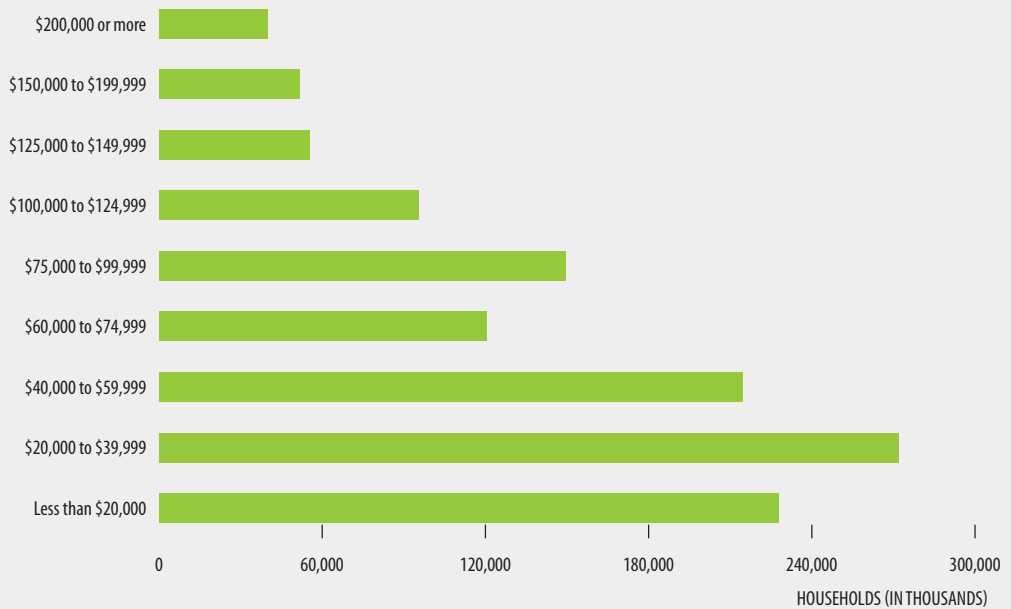


FIGURE 2 EDUCATIONAL ATTAINMENT BY RACE AND ETHNICITY
 Percent of population 25 and older, by education category



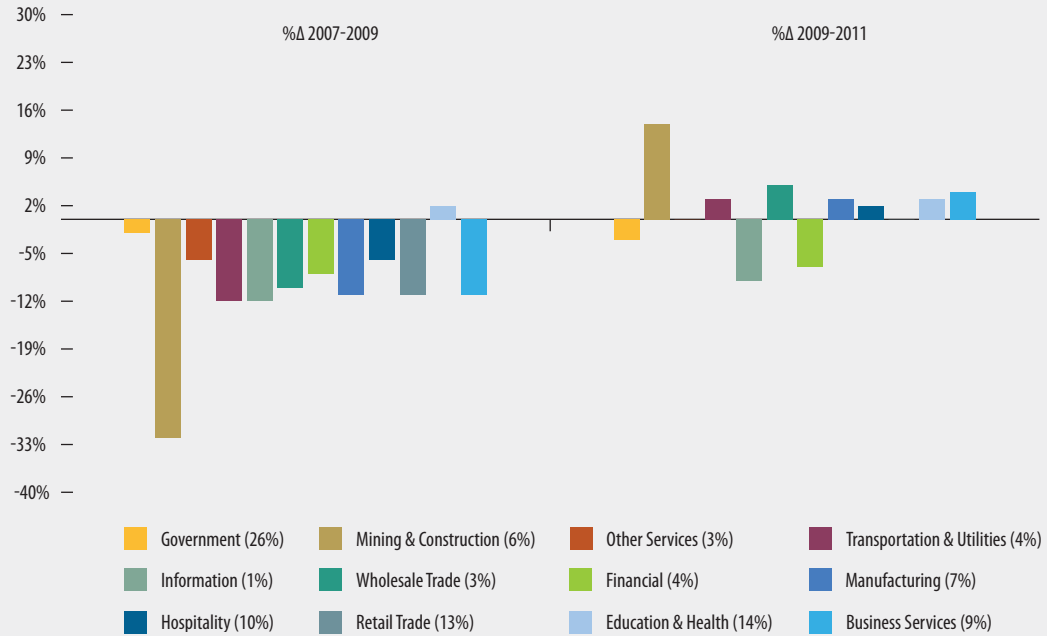
Source: 2006-2010 American Community, US Census

FIGURE 3 HOUSEHOLD INCOME DISTRIBUTION
 Number of households in each income category



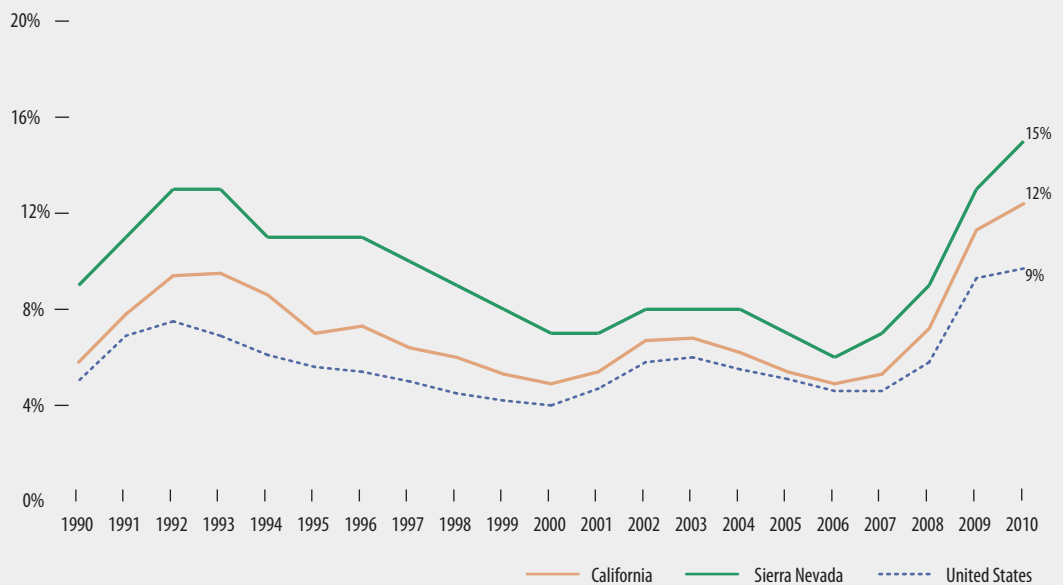
Source: 2006-2010 American Community, US Census

FIGURE 4 PERCENT CHANGE IN EMPLOYMENT BY SECTOR AND PERIOD



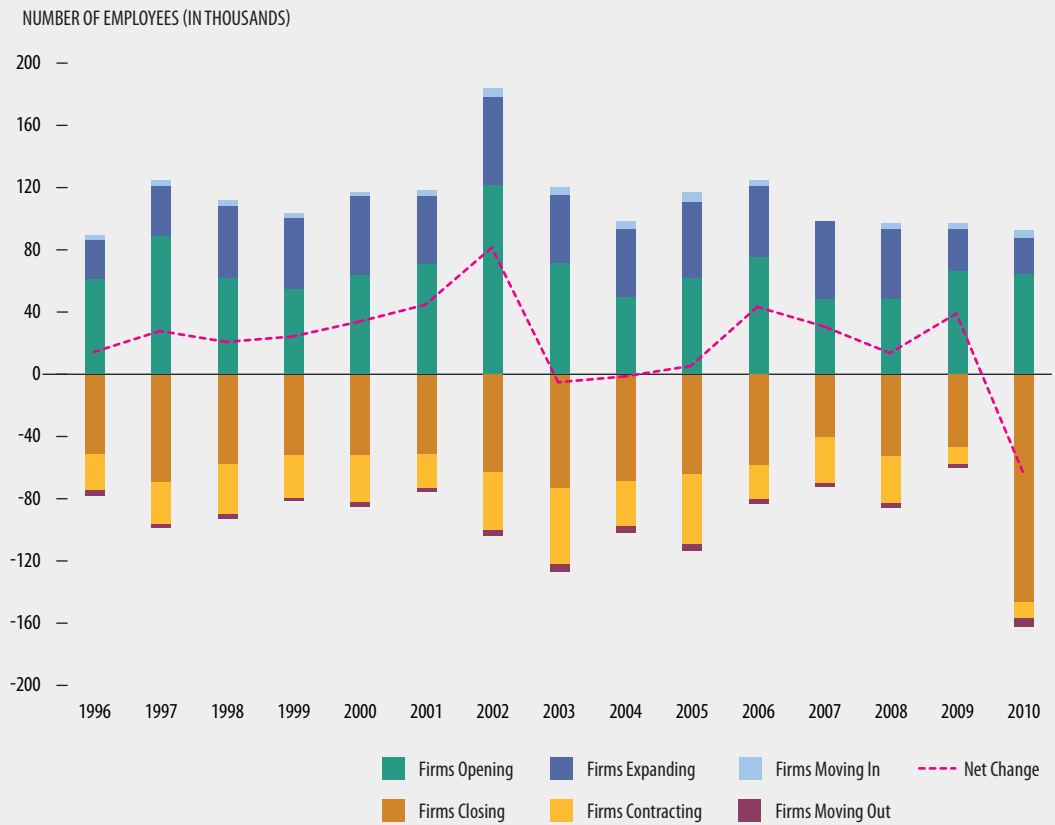
Source: Bureau of Labor Statistics, Current Employment Statistics (CES) seasonally adjusted
 Note: Number in parentheses is the sector size by employment share. Sierra Nevada Region Job Change By Industry does not include El Dorado, Placer and Yuba counties.

FIGURE 5 UNEMPLOYMENT RATE
 Percent of unemployed



Source: U.S. Bureau of Labor Statistics, Current Population Survey (CPS) and Local Area Unemployment Statistics (LAUS)

FIGURE 6 **JOBS GAINED AND LOST, BY SOURCE**
 Number of jobs lost or gained annually



Source: Bureau of Labor Statistics, Current Employment Statistics (CES) seasonally adjusted

HIGHLIGHTS

In each age group younger than 35, the majority of the population is Latino (See Figure 1).

In each age group 35 and older, the majority of the population is White (See Figure 1).

In 2010, the region lost 145,000 jobs as a result of firms closing down. Overall 65,000 jobs were lost, which is the largest decline in jobs between 1996 and 2010 (See Figure 6).

COUNTIES

- | | | | |
|-----------|----------|--------|----------|
| Alpine | Fresno | Modoc | Sierra |
| Amador | Kern | Mono | Tehama |
| Butte | Lassen | Nevada | Tulare |
| Calaveras | Madera | Placer | Tuolumne |
| El Dorado | Mariposa | Shasta | Yuba |